



LOGISTIC INFORMATION

Thai UHC Journey Workshop 2024

“Health Promotion: A Transformative Path Towards Sustainable Health and Well-being”

4-8 November, 2024 in Bangkok, Thailand

1. MEETING VENUE

Thai Health Promotion Foundation (ThaiHealth)

is an semi-autonomous government agency established by in 2001 to support health promotion movement in Thailand. It has contributed to a significant achievement in health promotion in Thailand over the past 23 years.

Vision

“All people living in Thailand have capability and live in society and environment conducive to good health.”

Mission

“To inspire, motivate, coordinate, and empower individuals and organizations in all sectors for the enhancement of health promotive capability as well as healthy society and environment to support health promotion movement in Thailand.”

ThaiHealth Activities

Over 20 years, ThaiHealth has worked with thousands of partners from all sectors to promote health among Thai people of all ages in accordance with national health policy, to reduce the consumption of alcohol beverages and tobacco, to develop community capacity in health promotion, to carry out studies and research and develop knowledge on health promotion, and to campaign on building up awareness beliefs and information. ThaiHealth utilizes its innovative and sustainable funds to strategically support over 3,000 health promotion programs/projects per year.

The Venue: ThaiHealth Center

The center is not only a working space for ThaiHealth and our partners but it is a specialized center for learning about well-being, aiming to be a platform to inspire and promote well-being in 4 dimensions to the public, including physical, mental, intellectual and social well-being. For more information about ThaiHealth, please visit our website: <https://en.thaihealth.or.th/>



Address: ThaiHealth Center, 99/8 Soi Ngamduplee, Thungmahamek, Sathorn, Bangkok, Thailand 10120

Tel: (66) 2 343 1500

Fax: (66) 2 343 1501

Email: InterRelations@thaihealth.or.th

Meeting Venue: ThaiHealth Center (in Thai)

สำนักงานกองทุนสนับสนุนการสร้างเสริมสุขภาพ (สสส.)

เลขที่ 99/8 ซอยงามดูพลี แขวงทุ่งมหาเมฆ เขตสาทร กรุงเทพฯ

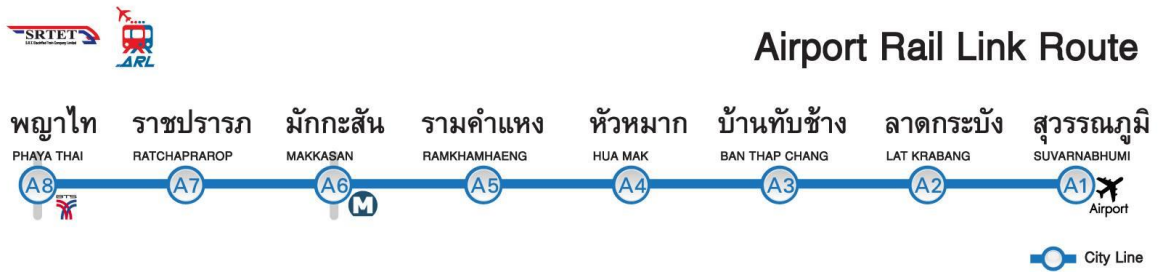
2. PUBLIC TRANSPORTATIONS

How to access the meeting venue

- From Suvarnabhumi International Airport

[By Airport Rail Link (ARL) & Bangkok Metro (MRT)]

Step 1: Take the escalator down from the Arrival Hall (2nd Floor) to entry the Airport Rail Link (ARL) which located on the Basement Floor, then take about 25 minutes ride from 'Suvarnabhumi Station (A1)' to 'Makkasan Station (A6)' with 35 THB fee. (See picture 1) (For more info, please see <https://www.bangkokairportonline.com/bangkok-airport-rail-link/>)



Picture 1: Airport Rail Link Route

Step 2: Exit the ARL at 'Makkasan Station' and make an interchange with the Bangkok Metro (MRT) Blue Line to connect 'Phetchaburi Station' (about 450 meters by walking). Take MRT ride to 'Lumpini Station' and use the Exit No. 1. Please wait for ThaiHealth shuttle van at the bus stop down the Exit No. 1. Our shuttle van will pick up every 15 minutes. Or use the Exit No. 2 for taking a public metered taxi which takes around 5 minutes with the approximate 50-70 THB fee to ThaiHealth Center. (See picture 2) (For more info, please see <https://www.mrt.co.th/en/mrt-route/11076>)



Picture 2: Bangkok Metro (MRT) Map, 'Phetchaburi Station' to 'Lumpini Station'



[By Airport Taxi]

Step 1: Ask the driver to go to ThaiHealth Center, located at 99/8 Soi Ngamduplee Thungmahamek, Sathorn which takes about 45 minutes with the approximate 500 THB fee (cash accepted only).

Please note that taxi fare from the airport will have an **additional 50 THB** (service fee), pay directly to driver. **If you have more than 1 luggage, there is extra charge at 20 THB/luggage. The starting fare of TAXI** is 35 Baht, but the exact fare will depend on traffic and any other surcharges such as express-way tolls or airport pick-up surcharge.

TAXI METER FARE RATE (BANGKOK)	
START	35.00 BAHT
Above 1 km to 10 km	6.50 Baht/km.
Above 10 km to 20 km	7.00 Baht/km.
Above 20 km to 40 km	8.00 Baht/km.
Above 40 km to 60 km	8.50 Baht/km.
Above 60 km to 80 km	9.00 Baht/km.
Distance over 80 km = 10.50 Baht/km.	
*Incase car cannot move or speed not over 6 km/hr. fare rate 3.00 Baht/minute	

[By Grab Taxi]

Step 1: Grab taxis are also available to book through Grab application. Once the booking is made, please use the Exit No. 4 at the Arrival Hall. Walk out of the terminal to wait for the grab taxi at the Grab Waiting Area.

• From Don Mueang International Airport

[By Don Mueang Airport Bus]

is a shuttle bus service, connecting Don Mueang International Airport with Bangkok City

- A1 Bus: from Don Mueang International Airport to BTS Sky Train 'Mo Chit Station'
- A2 Bus: from Don Mueang International Airport to Victory Monument (BTS Sky Train 'Victory Monument Station')
- A3 Bus: from Don Mueang International Airport to BTS Sky Train 'Sala Daeng Station' interchanged with Bangkok Metro (MRT) 'Si Lom Station' and to Lumpini Park

(A3 Bus is recommended. For more info, please see <https://thaiest.com/thailand/bangkok/a3-bus>)

Step 1: All Don Mueang Airport shuttle buses park on the first floor of Terminal 1 at Exit No.6 and take about 30-50 minutes ride to Lumpini Park (In Bound) with 50 THB per person (cash accepted only).

Step 2: Take a public metered taxi which takes around 5-10 minutes with the approximate 50-70 THB fee to ThaiHealth Center.

[By Airport Taxi]

Step 1: Ask the driver to ThaiHealth Center, located at 99/8 Soi Ngamduplee Thungmahamek, Sathorn which takes about 1 hour with the approximate 700 THB fee not including toll way fee (cash accepted only).

Please note that taxi fare from airport will have an **additional 50 THB** (service fee), pay directly to driver. **If you have more than 1 luggage, there is extra charge at 20 THB/luggage. The flag fare or starting fare of TAXI** is 35 Baht, but the exact fare will depend on traffic and any other surcharges such as express-way tolls or airport pick-up surcharge.

[By Grab Taxi]

Step 1: Grab taxis are also available to book through Grab application.



3. HOTEL AROUND THAIHEALTH CENTER

The details of the hotel accommodation and the room rates are as follows. They are good standard hotels located within the distance of 1 kilometer from ThaiHealth Center (the workshop venue).

1. Aetas Lumpini Bangkok Hotel

Address: 1030/4 Rama 4 Road, Thungmahamek, Sathorn Bangkok, Thailand 10120

Tel: + 66 (0) 2-618-9588

Website: <http://www.aetashotels.com/>

Room Type: Deluxe Room (available both double and twin bed)

Price: 2,600-3,500+ THB per room per night

Above rates include:

- Daily International Buffet Breakfast
- Complimentary WIFI Internet
- Complimentary in-room coffee/tea & mini bar
- Free access to salt-chlorinated indoor swimming pool & gym
- Service charge & VAT



2. Urbana Sathorn

Address: 55 South Sathorn Road, Thungmahamek, Sathorn Bangkok, Thailand 10120

Tel: +66 (0) 2-227-9999

Website: <https://urbanasathorn.com/>

Email: rsvn@urbanasathorn.com

Room Type: 1 Bedroom Executive

Price: 2,200+ THB per room per night

Above rates include:

- Daily Breakfast Buffet
- Free wireless Internet access
- Complimentary in-room coffee/tea
- Service charge & VAT



3. ibis BKK Sathorn

Address: Ngam Duphli Alley, Thungmahamek, Sathorn Bangkok, Thailand 10120

Tel: +66 (0) 2-659-2888

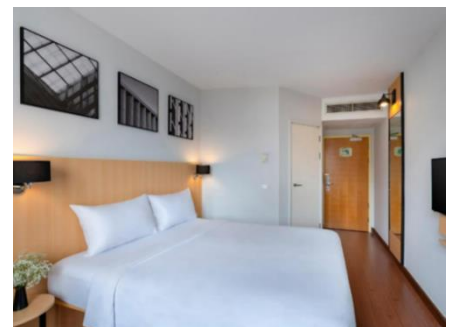
Website: <https://ibis-sathorn.com-bangkok.com/th/>

Room Type: Superior Room

Price: 1,300-1,500 THB per room per night

Above rates include:

- Daily Breakfast Buffet
- Free wireless Internet access
- Complimentary in-room coffee/tea
- Free shuttle service to metro nearby
- Service charge & VAT





4. MEALS

Lunch and coffee break will be arranged by the host throughout the workshop period (4-8 November 2024).

FOOD RESTRICTION: If you have any food restrictions, please indicate and specify your preferred dietary requirement together with the confirmation form.

5. COVID-19/FLU PROTECTION SUGGESTIONS

Please be aware of our current safety protocols as follows:

1. Suggest to wear a facial mask in public venue/indoor building in case you have flu-like symptoms.
4. In case of being tested COVID positive (with infection detected) during the workshop, you are required to be responsible for any healthcare and other related expenses occurred

6. OTHER INFORMATION

WEATHER

The weather in Bangkok in November is moderate with the average temperature varies from 24 C at night to 30 C. during the day. Sporadic rain may also occur. Please note that the meeting room temperature is usually quite cool (usually about 21-25 C.)

EXCHANGE RATE

1 USD equals approximately 33.28 THB (*as of 6 October 2024*). For other currency exchange rates, please refer to the Bank of Thailand website <https://www.bot.or.th/en/statistics/exchange-rate.html>

DRESS

During majority of the workshop period, a smart casual attire is recommended. During the opening day (on 4th November), it is recommended to wear business casual attire (with a suit or jacket).

TIME ZONE

Bangkok GMT+7:00 hrs.

DIAL CODE

International Dialing Code: +66; Area Code: 02

ELECTRICITY

Electricity: 220 volts, 50 Hz the electrical supply in Thailand is 220 Volts, if you come from 110 Volts country, please prepare the adapters for your electronic devices (e.g. mobile phone, laptop or etc.).



7. NECESSARY CONTACTS

EMERGENCY CONTACTS

- **Medical Requirement:**

- 1) **BNH Hospital**

Address: 9/1 Convent Road, Silom, Bang Rak, Bangkok 10500 Thailand

Emergency call: +66 (0) 2-022-0700

- 2) **Bumrungrad International Hospital**

Address: 33 Sukhumvit 2 (Soi Nana Nua) Wattana, Bangkok, 10110 Thailand

Emergency call: +66 (0) 2-066-8888

- **Police Emergency Call:** 191
- **Tourist Police:** 1155 (<http://www.thaitouristpolice.com>)
- **Tourism Authority of Thailand (TAT):** 1672 (<http://www.tourismthailand.org>)
- **Suvarnabhumi International Airport:** +66 (0) 2-132-1888 (<https://suvarnabhumi.airportthai.co.th/>)
- **Don Mueang International Airport:** +66 (0) 2-535-1192 (<https://donmueang.airportthai.co.th/>)

WORKSHOP CONTACTS

For any technical and logistic supports, please contact:

Secretariat: Email: thaiuhcjourney@gmail.com

Technical/Content Inquiries:

Mr. Rungsun Munkong, Thai Health Promotion Foundation

Email: rungsun@thaihealth.or.th

Tel: +66 (0) 89-251-8084

Logistical/Coordination Inquiries:

Ms. Dountawan Sang-ngoan

Email: dountawan.s@ihpp.thaigov.net

Tel: +66 (0) 63-506-2289